

About maritime archaeology

Maritime archaeology is an amazing subject incorporating shipwrecks, sunken aircraft, submerged prehistoric landscapes & settlements as well as ports, harbours and isolated finds.



Maritime archaeological sites can be in seas, lakes, rivers, beaches and foreshores.

Some are no longer near water at all!

There's more to it than you might think, visit the Maritime Bus to find out!



Requesting a visit

If you would like to book the Maritime Bus, just email info@hwtma.org.uk or phone with your event details.

When emailing please put 'Booking Maritime Bus' in the subject line of your email.

The Hampshire and Wight Trust for Maritime Archaeology



Maritime Bus: Stats

On the road		As a display	
Height: 10' 4"	(3.15m)	Height: 10' 4"	(3.15m)
Width: 7' 8"	(2.325m)	Width: 19' 9"	(6m)
Length: 23' 4"	(7.1m)	Length: 29' 7"	(9m)
Weight: 3.5 tonnes		Weight: 3.5 tonnes	

Room W1/95
National Oceanography Centre
Empress Dock, Southampton
SO14 3ZH
Registered Charity Number: 900025

www.hwtma.org.uk
02380 237300

The Maritime Bus



Got a minute for a dip into Maritime Archaeology?



Come and explore your sunken heritage!



Come onboard the Maritime Bus

The Maritime Bus tours around Hampshire, the Isle of Wight and beyond, bringing the fascinating world of maritime archaeology to your door step.

Climb onboard to discover an inspiring cocktail of the ancient and futuristic. There are interactive displays, archaeology you can touch and hold, movies, models, a digital microscope and a whole host of equipment and hands-on activities related to maritime archaeology.

Who is it for?

Everybody! The Maritime Bus was designed by HWTMA staff and custom-built to be fully accessible. No matter what your age, size or knowledge of the subject, there's sure to be something you'll want to have a go on, or take a closer look at. If you see the Bus out and about, come and take a closer look.

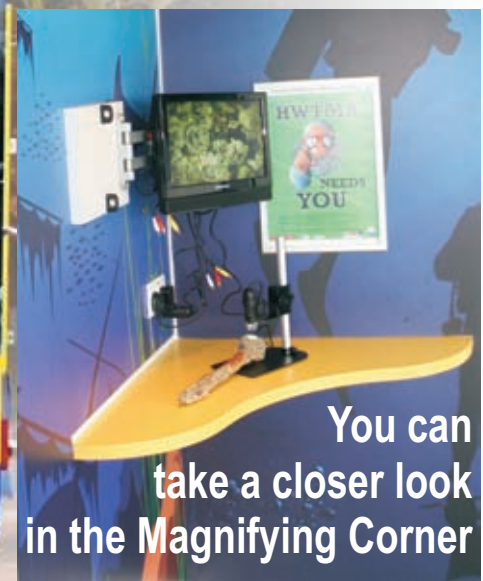
The contents of the Bus are constantly changing with new artefacts, models, posters, videos, interactive software, games and activities, so repeat visits are highly recommended. Come and see what's new!

Where is the Maritime Bus?

The Bus visits a wide range of locations across the south, from schools and community centres to parks, open spaces, museums and supermarket car parks.

The Maritime Bus is funded by the Heritage Lottery Fund and could come to you! Contact us (see back of leaflet) for further information.

The content of the Bus can be tailored to support particular themes or topics, or it can bring a range of resources and materials, so maritime archaeology can be explored in depth!



You can take a closer look in the Magnifying Corner